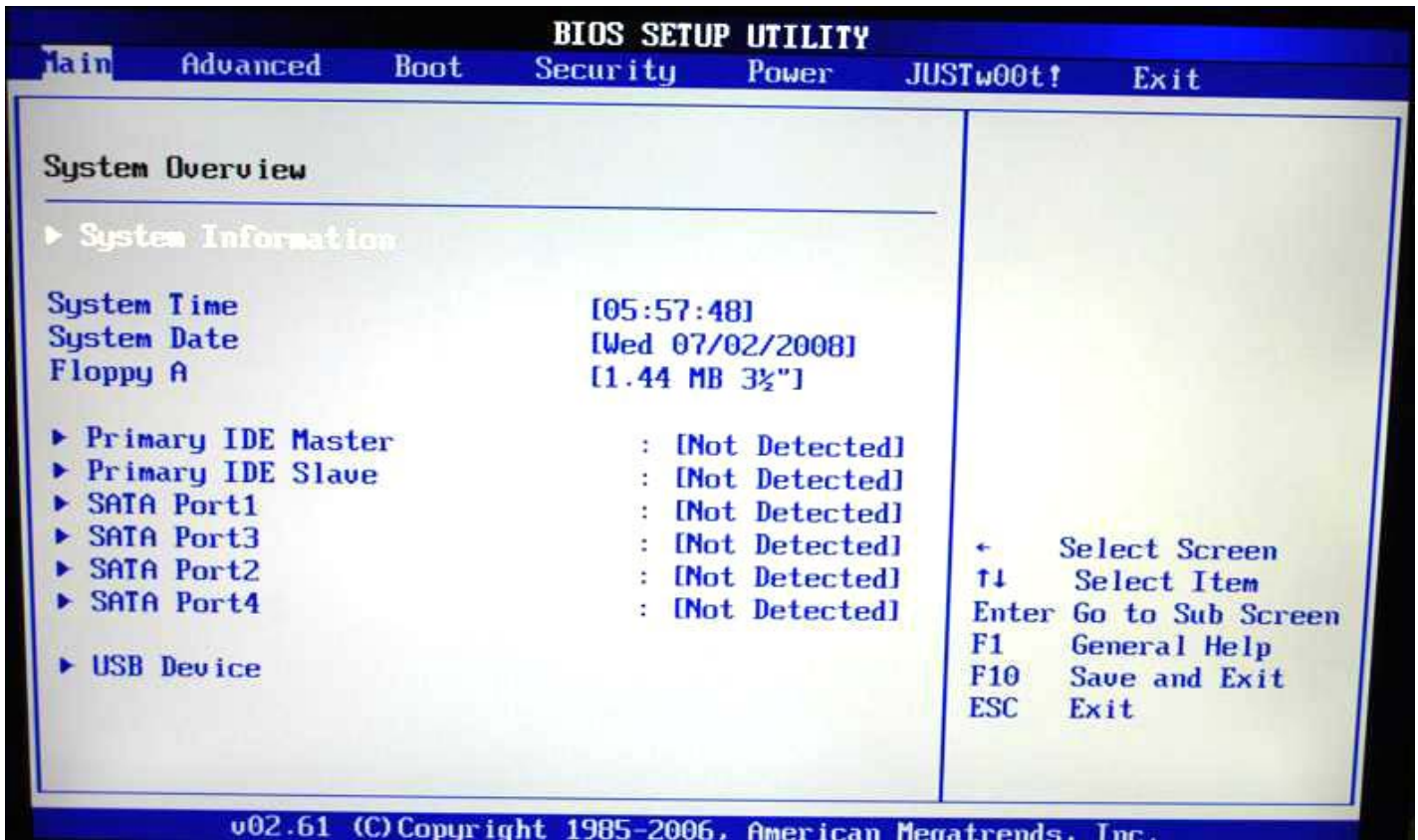


AMI Bios Options GeForce8200



BIOS SETUP UTILITY

Main

System Overview

AMIBIOS

Version :08.00.15
Build Date:06/06/08
ID :C780A330

Processor

AMD Phenom(tm) 9750 Quad-Core Processor
Speed :2415MHz
Count :4

System Memory

Size :1984MB

System Time

[:58:48]

System Date

[Wed 07/02/2008]

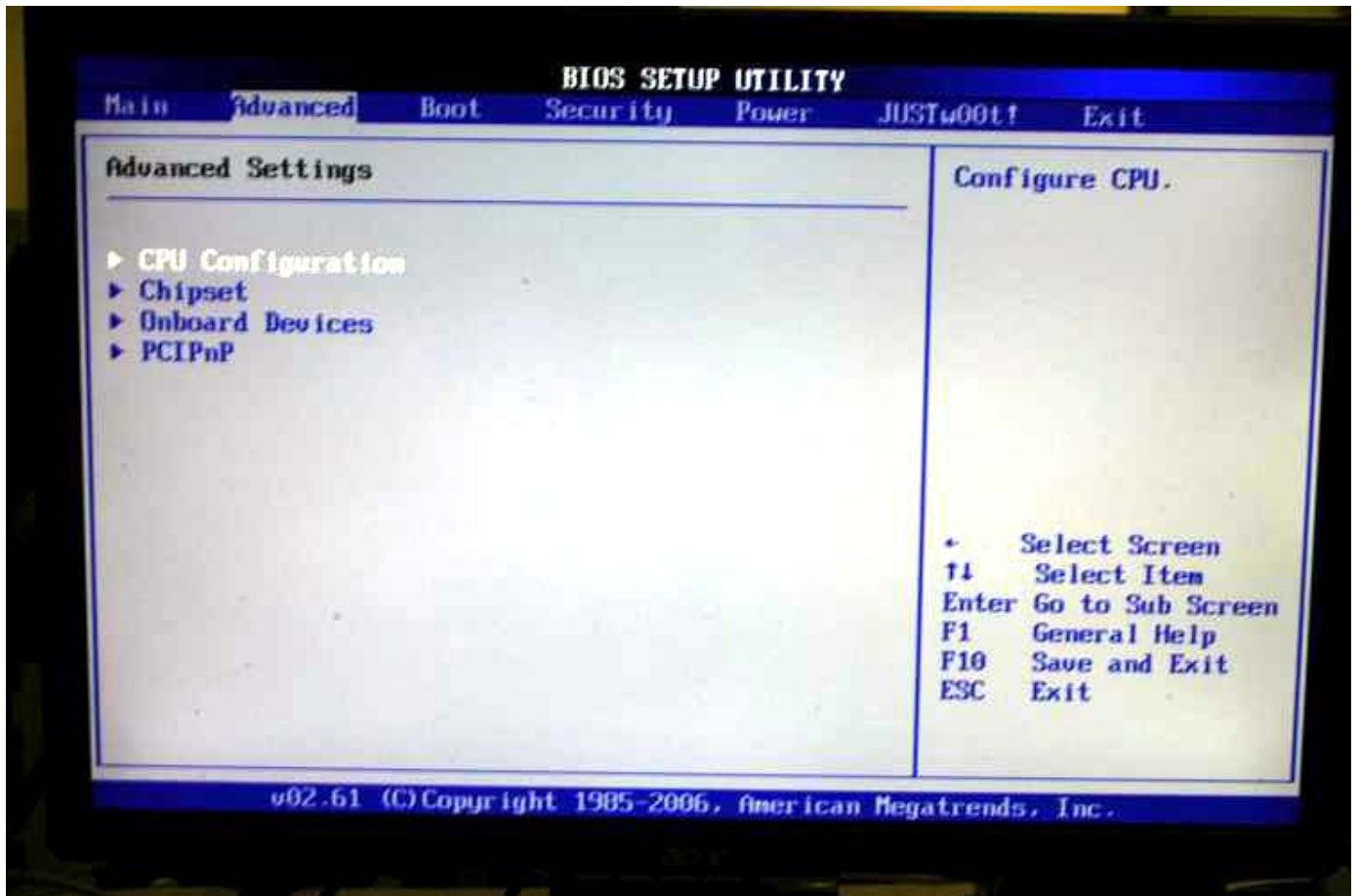
Use [ENTER], [TAB]
or [SHIFT-TAB] to
select a field.

Use [+] or [-] to
configure system Time.

← Select Screen
↑↓ Select Item
+- Change Field
Tab Select Field
F1 General Help
F10 Save and Exit
ESC Exit

v02.61 (C) Copyright 1985-2006, American Megatrends, Inc.

System information section within main tab



Advanced Tab

BIOS SETUP UTILITY

Advanced

CPU Configuration

Module Version: 13.29
AGESA Version: 3.1.8.0
Physical Count: 1
Logical Count : 4

AMD Phenom(tm) 9750 Quad-Core Processor
Revision: B3
Cache L1: 512KB
Cache L2: 2048KB
Cache L3: 2MB
Speed : 2411MHz, NB Clk: 1800MHz
Able to Change Freq. : Yes
uCode Patch Level : 0x1000065

GART Error Reporting [Disabled]
Microcode Update [Enabled]
Secure Virtual Machine Mode [Enabled]
Cool 'n' Quiet [Disabled]
ACPI SRAT Table [Enabled]

This option should remain disabled for the normal operation. The driver developer may enable it for testing purpose.

← Select Screen
↑↓ Select Item
+- Change Option
F1 General Help
F10 Save and Exit
ESC Exit

v02.61 (C) Copyright 1985-2006, American Megatrends, Inc.

CPU Configuration

BIOS SETUP UTILITY

Advanced

Advanced Chipset Settings

Hybrid SLI support	[Disabled]
SLI support	[Disabled]
Primary Graphics Adapter	[PCIe UGA Card Firs]
iGPU and Ext-UGA Selection	[Both Exist and iGP]
iGPU Frame Buffer Detect	[Disabled]
iGPU Frame Buffer Size	[64MB]

- 1 Memeory have to over 2G size
- 2 Disaply from iGPU first
- 3 External UGA must support this feture

← Select Screen
↑↓ Select Item
+- Change Option
F1 General Help
F10 Save and Exit
ESC Exit

v02.61 (C) Copyright 1985-2006, American Megatrends, Inc.

Chipset options, important for Hybrid SLI and add in graphics cards.

Onboard Devices Setting

Advanced

Onboard Devices Setting

PCIe training	[Disabled]
Lan1 Controller	[Auto]
USB 1.1 Controller	[Enabled]
USB 2.0 Controller	[Enabled]
AZALIA AUDIO	[Internal codec + E]
OnChip P-ATA Controller	[Enabled]
OnChip S-ATA Controller	[Enabled]
SATA Mode select	[SATA Mode]
OnBoard Floppy Controller	[Enabled]
Serial Port1 Address	[3F8/IRQ4]
Serial Port2 Address	[Disabled]
HDMI/DVI	[Auto]

Cards supporting gen2

- ← Select Screen
- ↑↓ Select Item
- + - Change Option
- F1 General Help
- F10 Save and Exit
- ESC Exit

BIOS SETUP UTILITY

Advanced

Advanced PCI/PnP Settings

WARNING: Setting wrong values in below sections may cause system to malfunction.

Clear NVRAM

Plug & Play O/S	[No]
PCI Latency Timer	[32]
Allocate IRQ to PCI UGA	[Yes]
Palette Snooping	[Disabled]
PCI IDE BusMaster	[Enabled]
OffBoard PCI/ISA IDE Card	[Auto]
IRQ3	[Available]
IRQ4	[Available]
IRQ5	[Available]
IRQ7	[Available]
IRQ9	[Available]
IRQ10	[Available]
IRQ11	[Available]

Clear NVRAM during System Boot.

+ Select Screen
↑↓ Select Item
←→ Change Option
F1 General Help
F10 Save and Exit
ESC Exit

v02.61 (C) Copyright 1985-2006, American Megatrends, Inc.

BIOS SETUP UTILITY

Advanced

Advanced PCI/PnP Settings

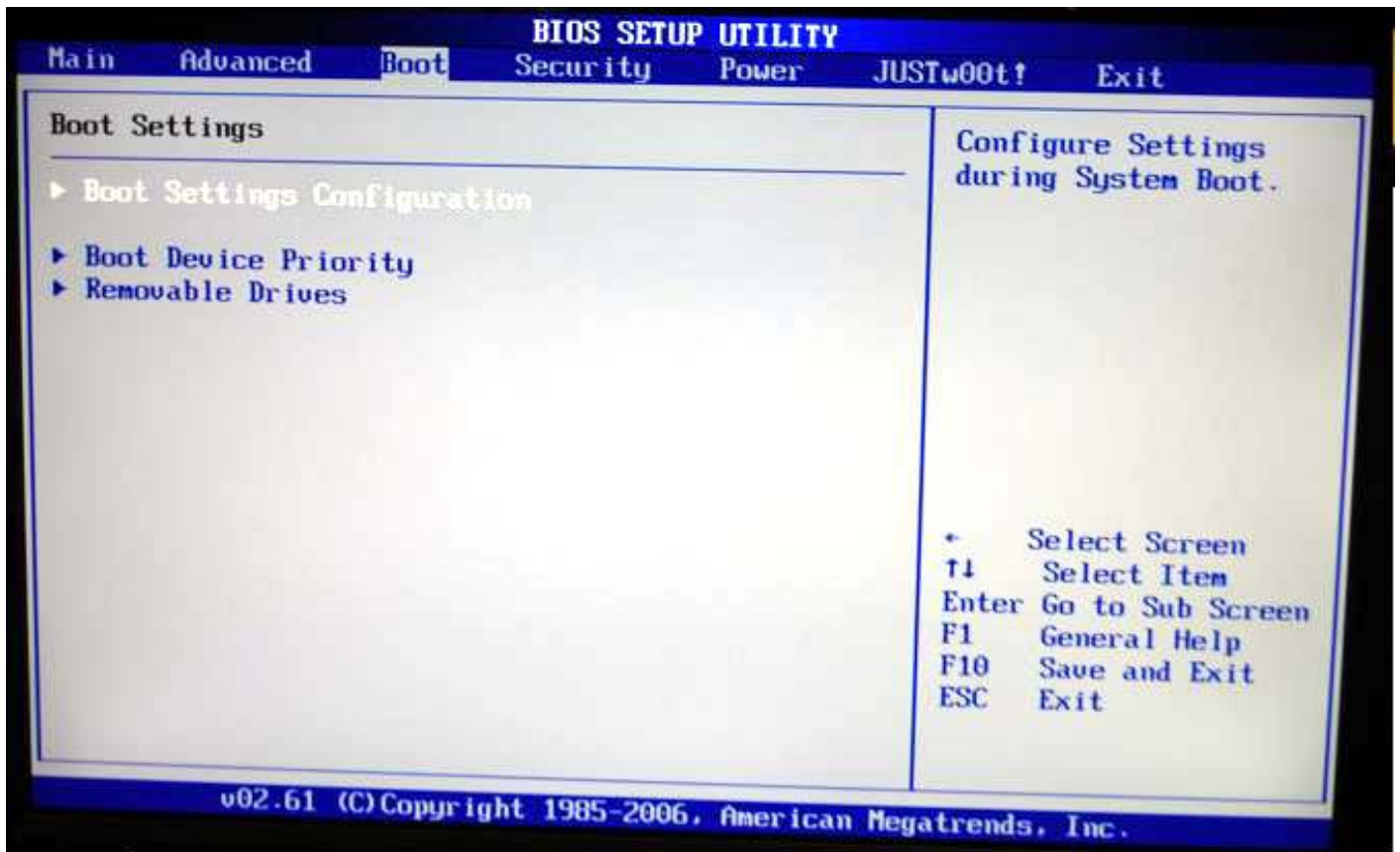
WARNING: Setting wrong values in below sections may cause system to malfunction.

Clear NVRAM

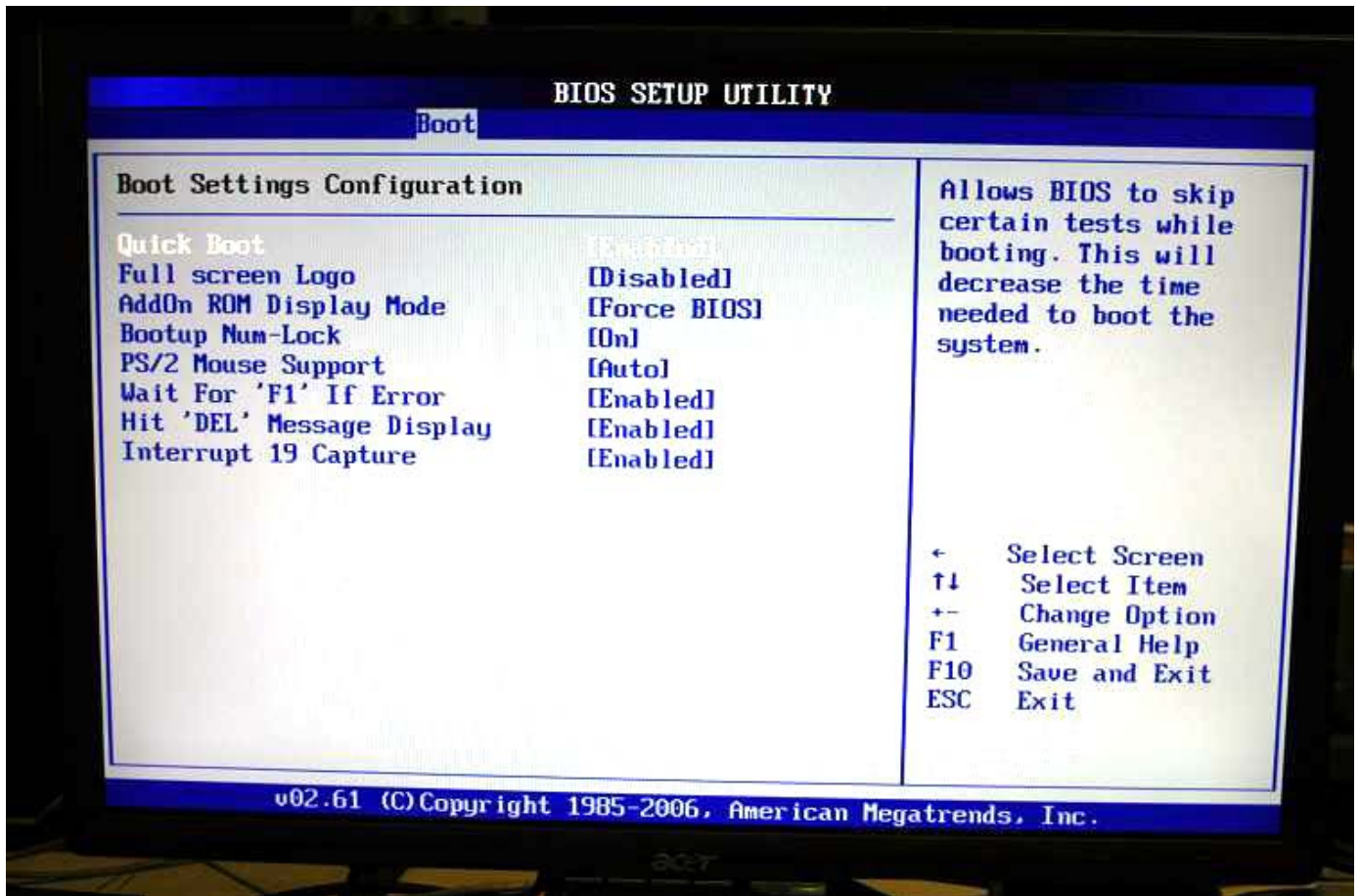
Plug & Play O/S	[No]
PCI Latency Timer	[32]
Allocate IRQ to PCI UGA	[Yes]
Palette Snooping	[Disabled]
PCI IDE BusMaster	[Enabled]
OffBoard PCI/ISA IDE Card	[Auto]
IRQ3	[Available]
IRQ4	[Available]
IRQ5	[Available]
IRQ7	[Available]
IRQ9	[Available]
IRQ10	[Available]
IRQ11	[Available]

Clear NVRAM during System Boot.

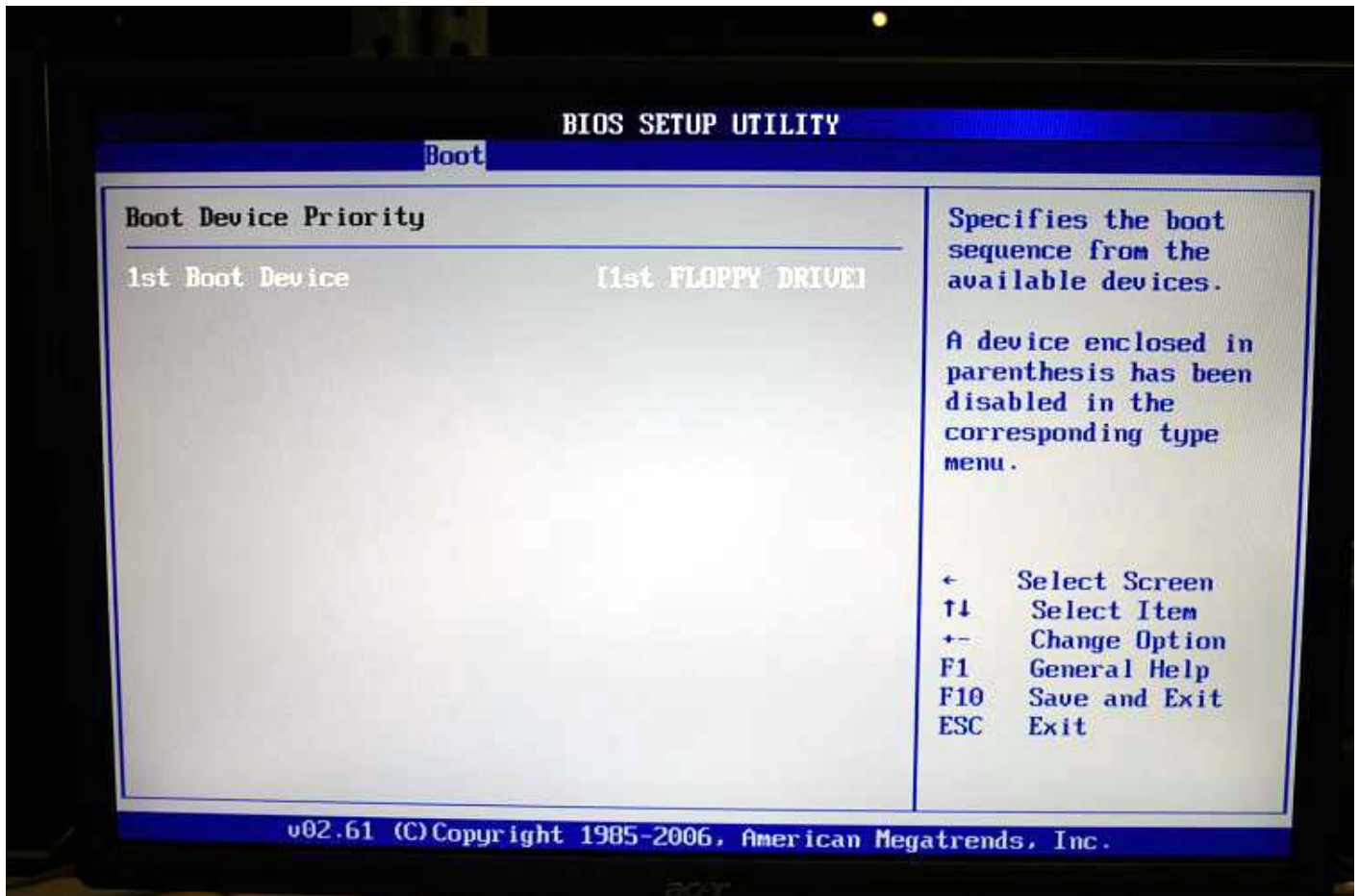
- + Select Screen
- ↑↓ Select Item
- + - Change Option
- F1 General Help
- F10 Save and Exit
- ESC Exit



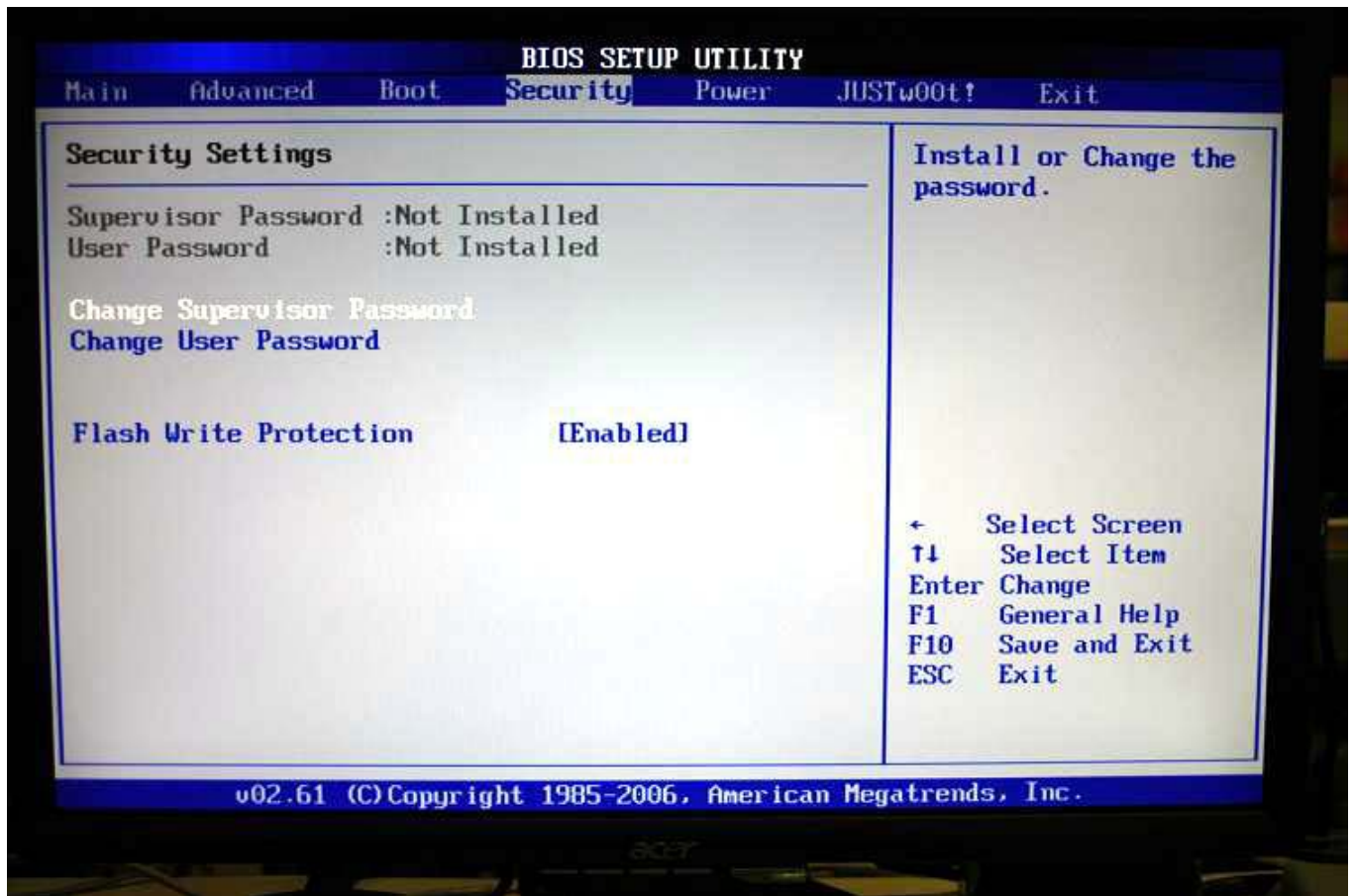
Boot options.



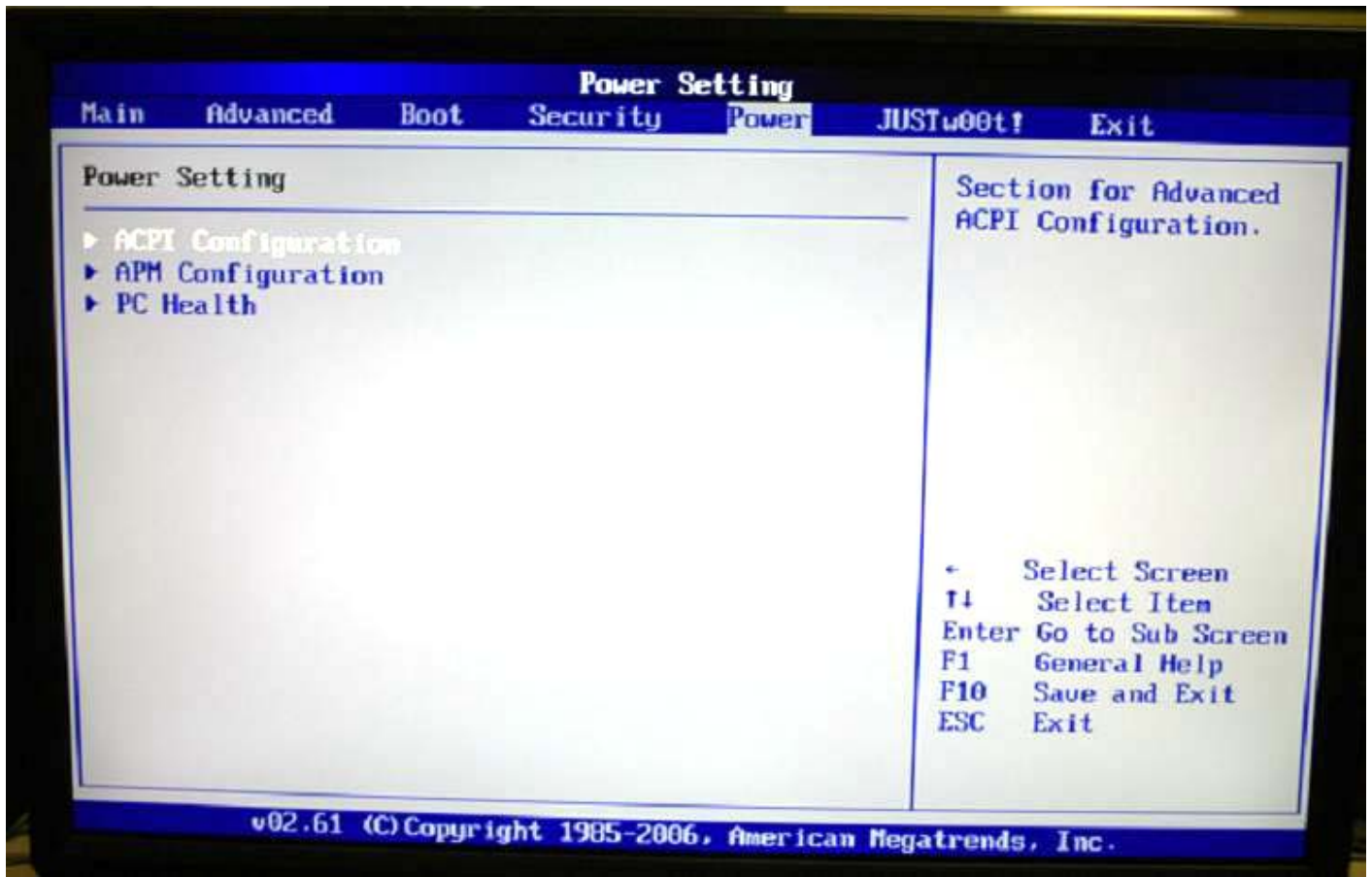
Boot Settings Configuration.



Boot Priority



Security Tab



Power Tab

BIOS SETUP UTILITY

Power

APM Configuration

Power Management/APM [Enabled]

Power Button Mode [On/Off]

APM Resume Event Configuration

Resume On PME# [Disabled]

Resume On PCIE Wake# [Disabled]

Resume On LAN (MAC) [Disabled]

Resume On Ring [Disabled]

RESUME ON USB [Disabled]

Resume By RTC Alarm [Disabled]

Keyboard WakeUp [Disabled]

Specific Key for PowerOn

Mouse WakeUp [Disabled]

PWRON After PWR-Fail [OFF]

Enable or disable APM.

- ← Select Screen
- ↑↓ Select Item
- + - Change Option
- F1 General Help
- F10 Save and Exit
- ESC Exit

v02.61 (C) Copyright 1985-2006, American Megatrends, Inc.

APM Config

BIOS SETUP UTILITY

Power

PC Health

SYS Temp :36°C/96°F
CPU Temp :52°C/125°F

CPU Fan :3183 RPM

CPU Voltage :1.368 V
3.3V Voltage :3.312 V
+12V Voltage :12.091 V
DRAM Voltage :1.920 V
Chip Voltage :1.152 V
+5V Voltage :5.094 V
VBAT :3.120 V

CPUFAN Mode Setting

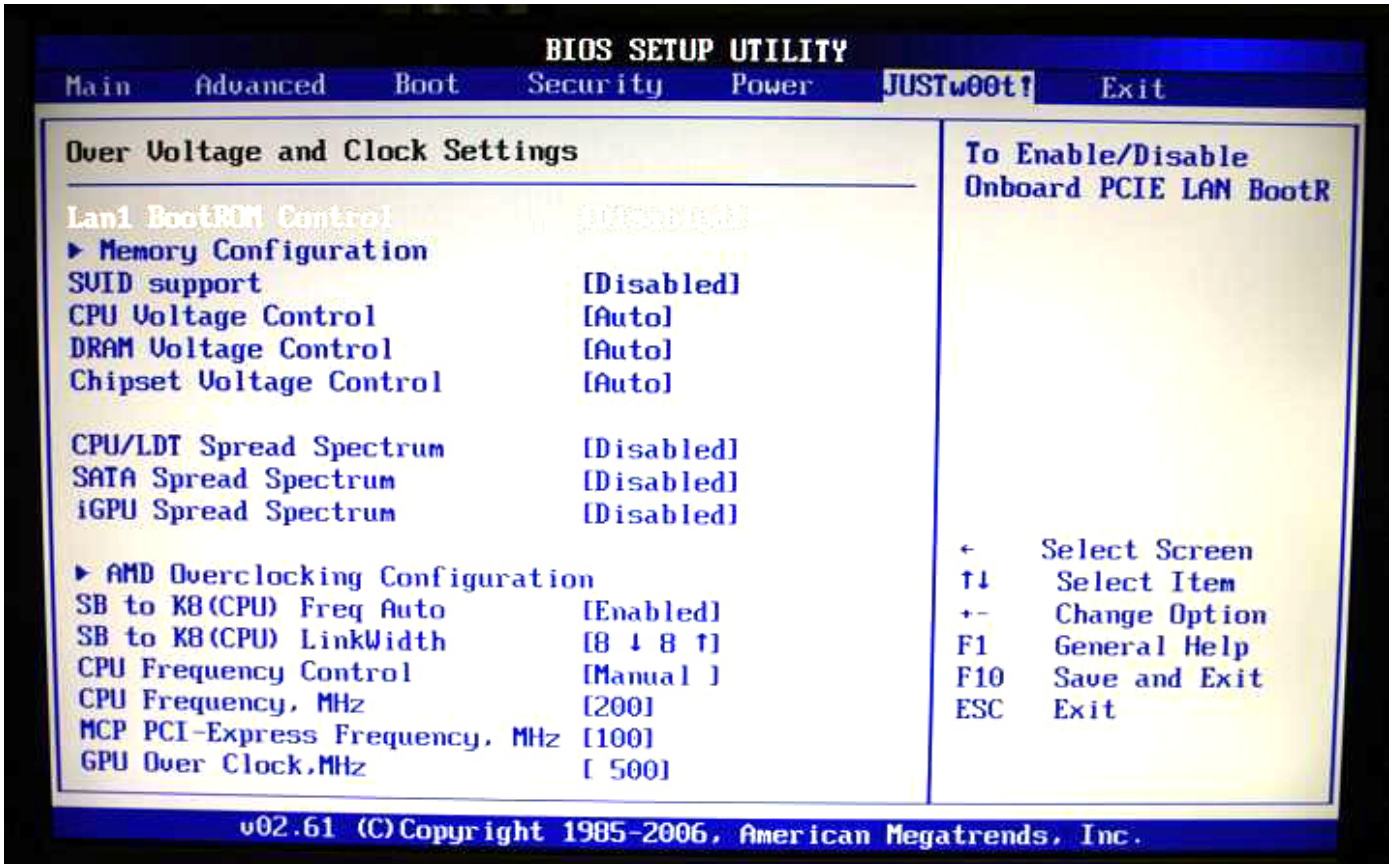
CPUFAN PWM Control [250]

CPUFan confiruration mode setting

- ← Select Screen
- ↑↓ Select Item
- + - Change Option
- F1 General Help
- F10 Save and Exit
- ESC Exit

v02.61 (C) Copyright 1985-2006, American Megatrends, Inc.

System Health/monitor



JUSTw00t tab.

BIOS SETUP UTILITY

JUSTw00t!

NorthBridge Chipset Configuration

- ▶ Memory Configuration
- ▶ DRAM Timing Configuration

Alternate VID [Auto]

Memory CLK	:400 MHz, 400 MHz
CAS Latency(Tcl)	:5.0, 5.0
RAS/CAS Delay(Trcd)	:5 CLK, 5 CLK
Row Precharge Time(Trp)	:9 CLK , 9 CLK
Min Active RAS(Tras)	:18 CLK, 18 CLK
RAS/RAS Delay(Trrd)	:5 CLK, 5 CLK
Row Cycle (Trc)	:23 CLK, 23 CLK
Memory 2T Mode	[2T Mode]

← Select Screen
↑↓ Select Item
Enter Go to Sub Screen
F1 General Help
F10 Save and Exit
ESC Exit

v02.61 (C) Copyright 1985-2006, American Megatrends, Inc.

Memory Configuration

BIOS SETUP UTILITY

JUSTw00t!

AMD Overclocking Configuration

Custom P-States

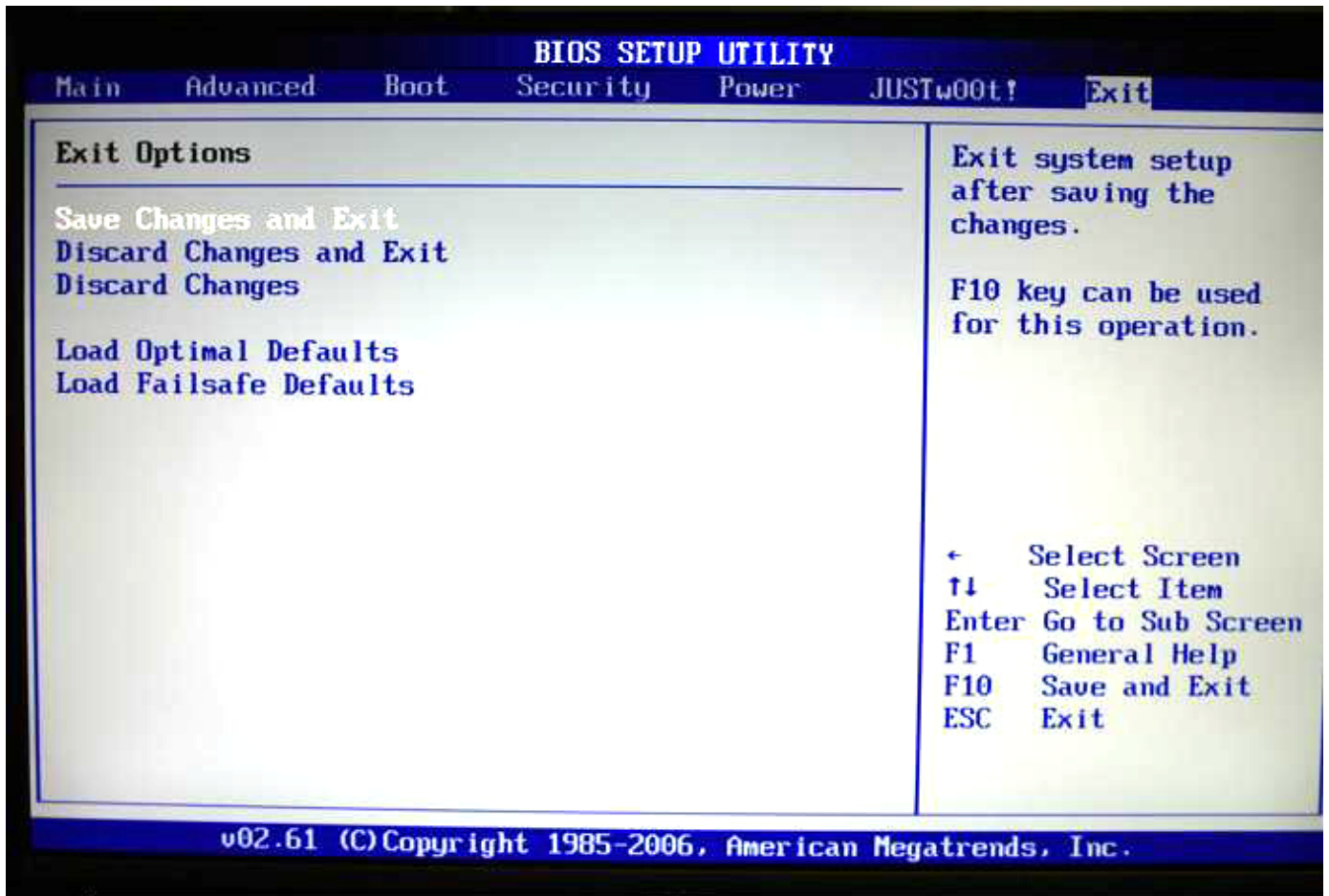
[Enabled]
Current CPU FID : 8h
Current CPU VID : 14h
Current CPU DID : Divided by 1
Current NB FID : 5h
Current NB VID : 14h
Current NB DID : Divided by 1
Core FID [00]
Core VID [00]
Core DID [Divided by 1]
NB FID [00]
NB VID [00]
NB DID [Divided by 1]

Tells BIOS whether to use the setup options below this to configure the P-States, or whether to configure the P-States automatically

← Select Screen
↑↓ Select Item
+- Change Option
F1 General Help
F10 Save and Exit
ESC Exit

v02.61 (C) Copyright 1985-2006, American Megatrends, Inc.

Over clocking configuration



Exit Tab