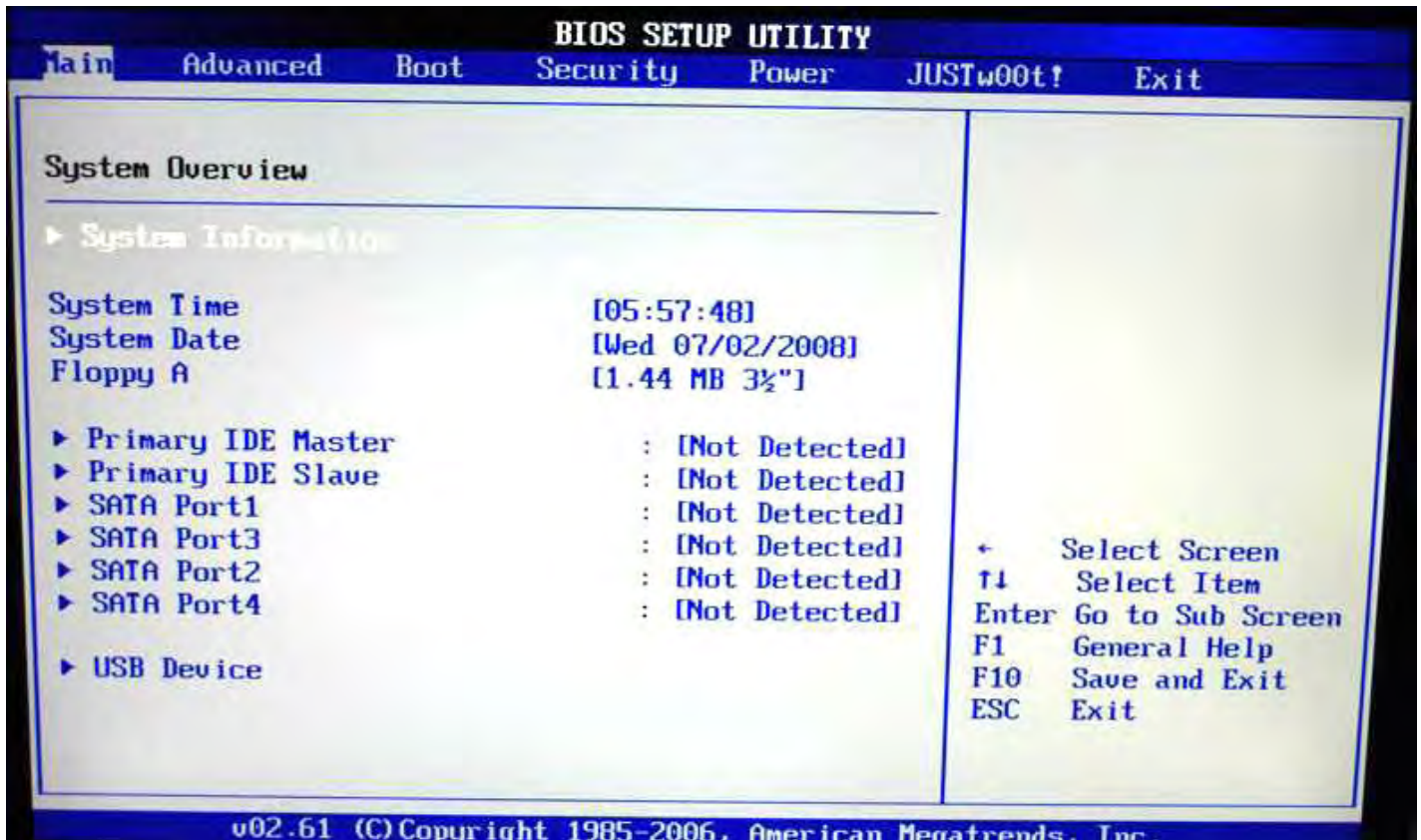


AMI Bios Options GeForce8200



BIOS SETUP UTILITY

Main

System Overview

AMIBIOS

Version :08.00.15
Build Date:06/06/08
ID :C780A330

Processor

AMD Phenom(tm) 9750 Quad-Core Processor
Speed :2415MHz
Count :4

System Memory

Size :1984MB

System Time

[:58:48]

System Date

[Wed 07/02/2008]

Use [ENTER], [TAB]
or [SHIFT-TAB] to
select a field.

Use [+] or [-] to
configure system Time.

← Select Screen
↑↓ Select Item
+- Change Field
Tab Select Field
F1 General Help
F10 Save and Exit
ESC Exit

v02.61 (C) Copyright 1985-2006, American Megatrends, Inc.

System information section within main tab



Advanced Tab

BIOS SETUP UTILITY

Advanced

CPU Configuration

Module Version: 13.29
AGESA Version: 3.1.8.0
Physical Count: 1
Logical Count : 4

AMD Phenom(tm) 9750 Quad-Core Processor

Revision: B3

Cache L1: 512KB

Cache L2: 2048KB

Cache L3: 2MB

Speed : 2411MHz, NB Clk: 1800MHz

Able to Change Freq. : Yes

uCode Patch Level : 0x1000065

GART Error Reporting

Microcode Update [Enabled]

Secure Virtual Machine Mode [Enabled]

Cool 'n' Quiet [Disabled]

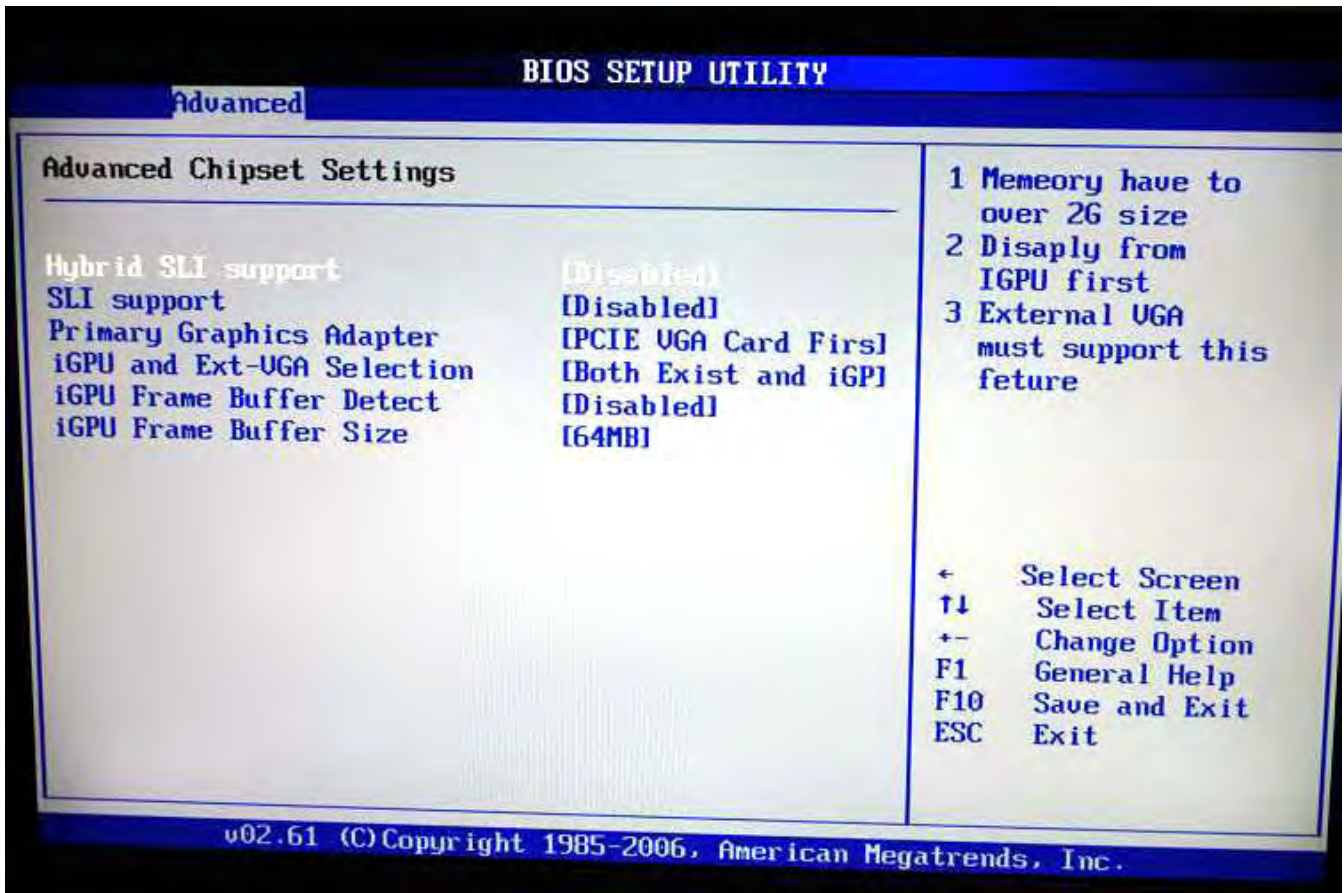
ACPI SRAT Table [Enabled]

This option should remain disabled for the normal operation. The driver developer may enable it for testing purpose.

← Select Screen
↑↓ Select Item
+ - Change Option
F1 General Help
F10 Save and Exit
ESC Exit

v02.61 (C) Copyright 1985-2006, American Megatrends, Inc.

CPU Configuration



Chipset options, important for Hybrid SLI and add in graphics cards.

Onboard Devices Setting

Advanced

Onboard Devices Setting

PCIE training

Lan1 Controller	[Auto]
USB 1.1 Controller	[Enabled]
USB 2.0 Controller	[Enabled]
AZALIA AUDIO	[Internal codec + E]
OnChip P-ATA Controller	[Enabled]
OnChip S-ATA Controller	[Enabled]
SATA Mode select	[SATA Mode]
OnBoard Floppy Controller	[Enabled]
Serial Port1 Address	[3F8/IRQ4]
Serial Port2 Address	[Disabled]
HDMI/DVI	[Auto]

Cards supporting gen2

+ Select Screen
↑↓ Select Item
+- Change Option
F1 General Help
F10 Save and Exit
ESC Exit

BIOS SETUP UTILITY

Advanced

Advanced PCI/PnP Settings

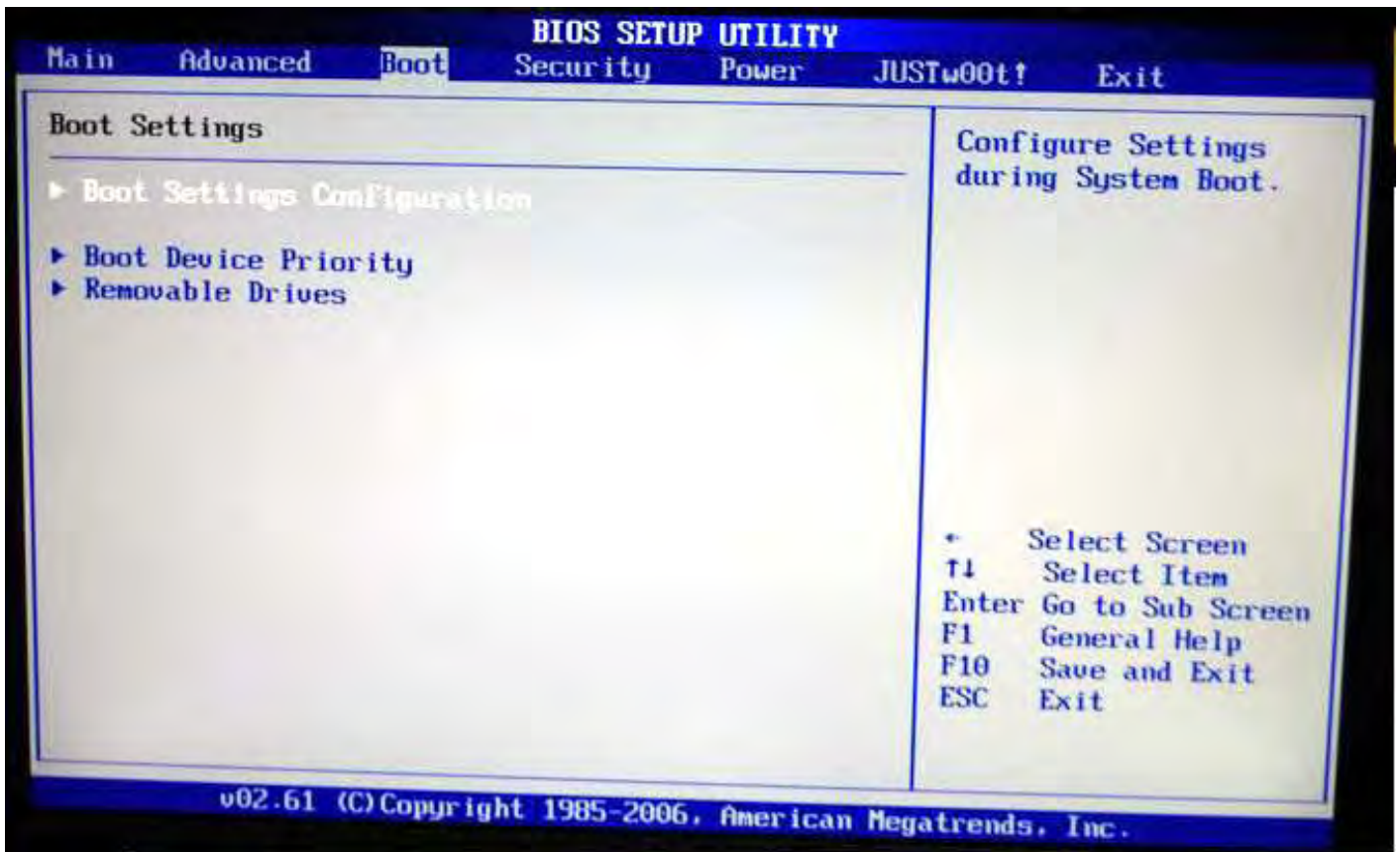
WARNING: Setting wrong values in below sections may cause system to malfunction.

Clear NVRAM

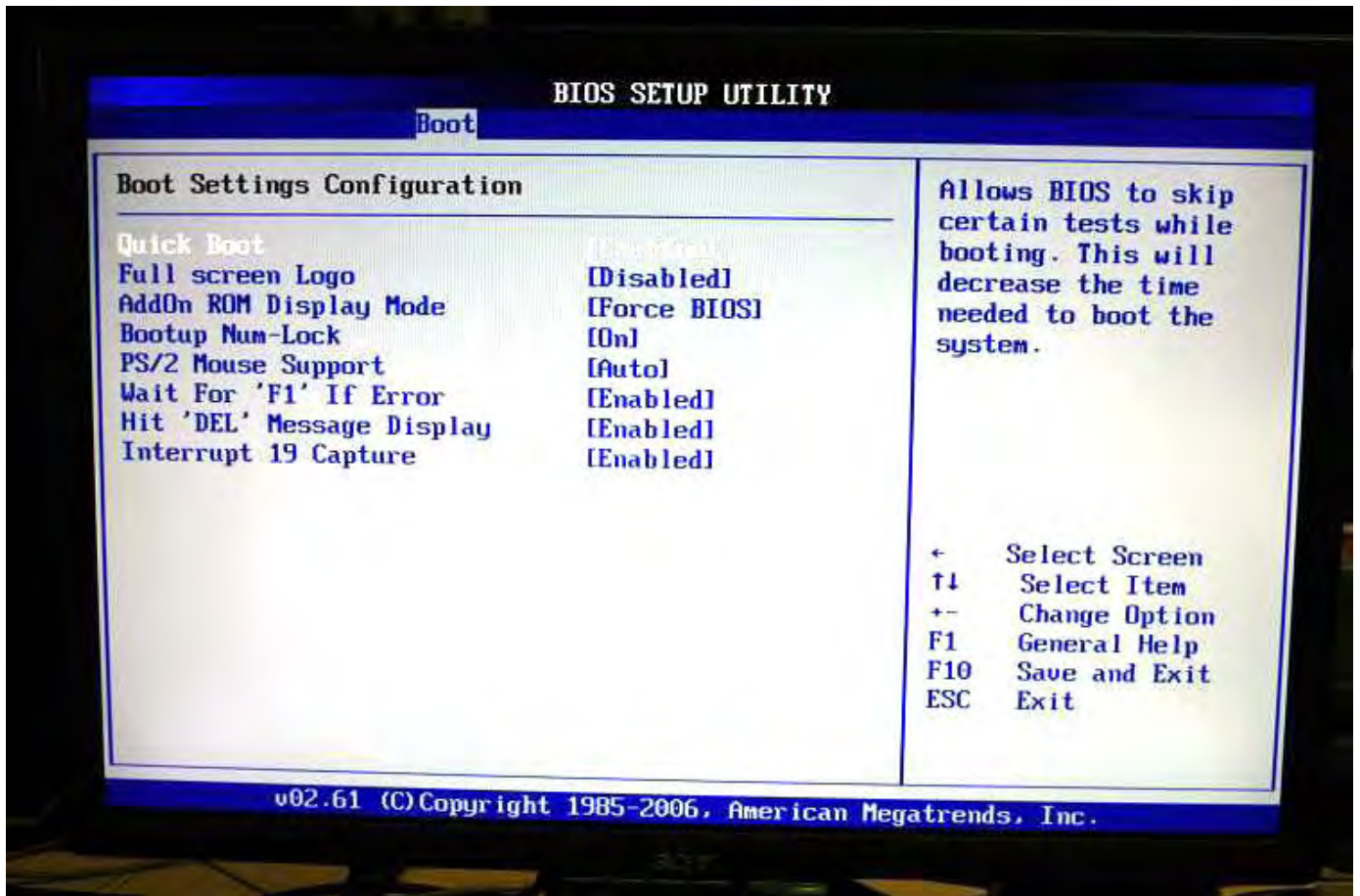
Plug & Play O/S	[No]
PCI Latency Timer	[32]
Allocate IRQ to PCI UGA	[Yes]
Palette Snooping	[Disabled]
PCI IDE BusMaster	[Enabled]
OffBoard PCI/ISA IDE Card	[Auto]
IRQ3	[Available]
IRQ4	[Available]
IRQ5	[Available]
IRQ7	[Available]
IRQ9	[Available]
IRQ10	[Available]
IRQ11	[Available]

Clear NVRAM during System Boot.

- + Select Screen
- ↑↓ Select Item
- + - Change Option
- F1 General Help
- F10 Save and Exit
- ESC Exit



Boot options.



Boot Settings Configuration.

BIOS SETUP UTILITY

Boot

Boot Device Priority

1st Boot Device [1st FLOPPY DRIVE]

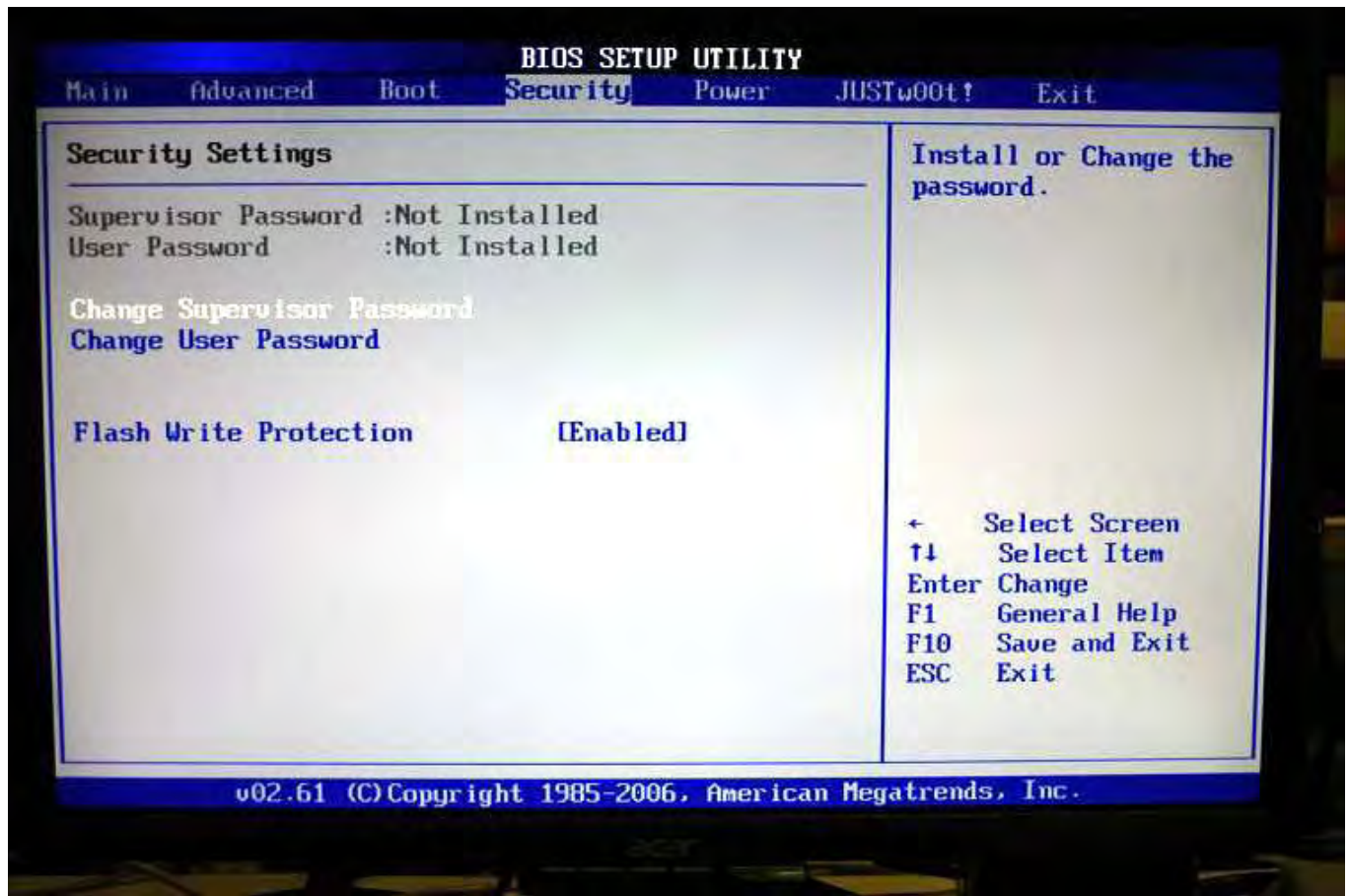
Specifies the boot sequence from the available devices.

A device enclosed in parenthesis has been disabled in the corresponding type menu.

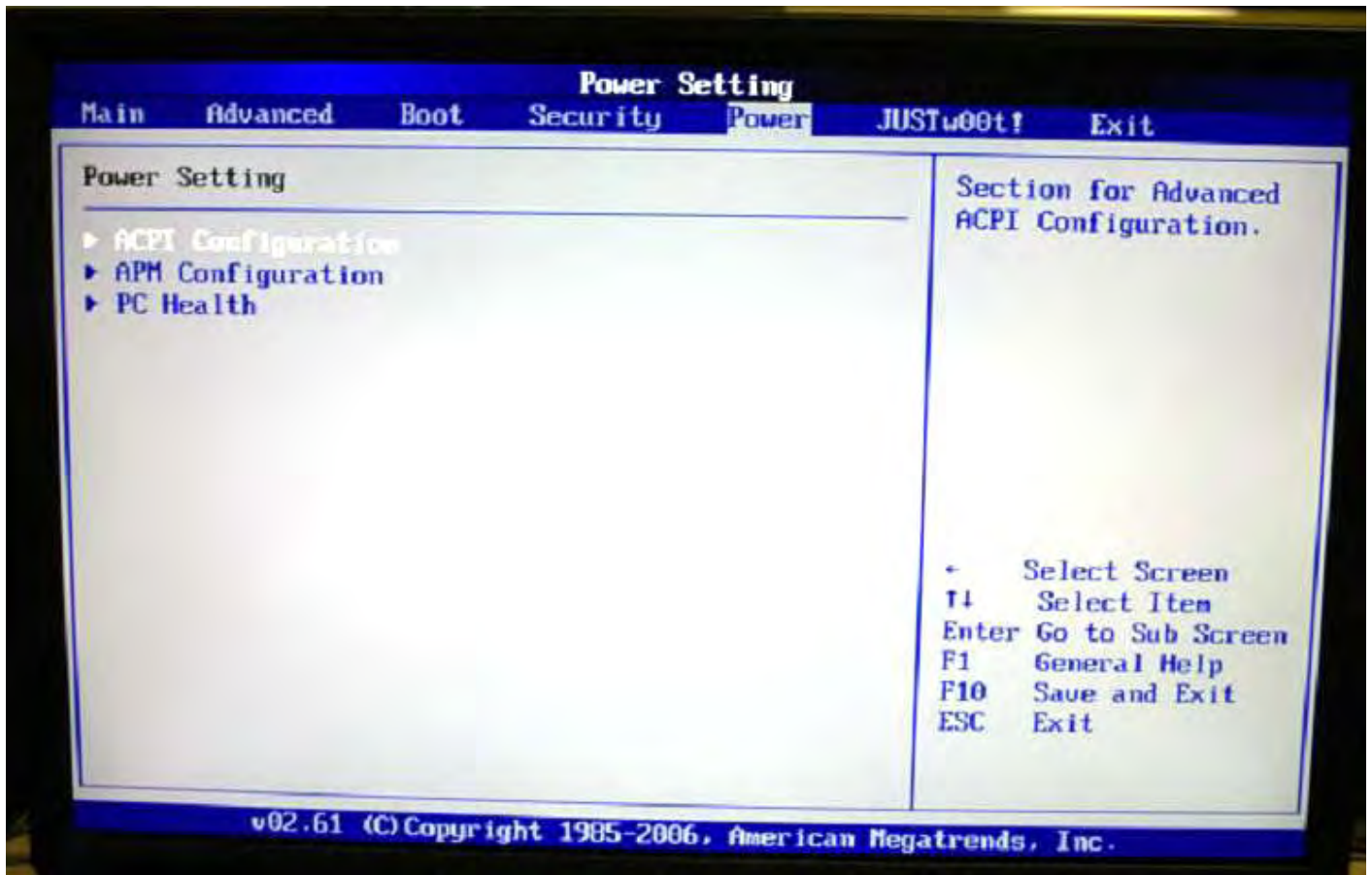
← Select Screen
↑↓ Select Item
+ - Change Option
F1 General Help
F10 Save and Exit
ESC Exit

v02.61 (C) Copyright 1985-2006, American Megatrends, Inc.

Boot Priority



Security Tab



Power Tab

BIOS SETUP UTILITY

Power

APM Configuration

Power Management/APM

Power Button Mode [On/Off]

APM Resume Event Configuration

Resume On PME# [Disabled]
Resume On PCIE Wake# [Disabled]
Resume On LAN (MAC) [Disabled]
Resume On Ring [Disabled]
RESUME ON USB [Disabled]
Resume By RTC Alarm [Disabled]
Keyboard WakeUp [Disabled]
Specific Key for PowerOn
Mouse WakeUp [Disabled]
PWRON After PWR-Fail [OFF]

Enable or disable APM.

+ Select Screen
↑↓ Select Item
+- Change Option
F1 General Help
F10 Save and Exit
ESC Exit

v02.61 (C) Copyright 1985-2006, American Megatrends, Inc.

APM Config

BIOS SETUP UTILITY

Power

PC Health

SYS Temp :36°C/96°F
CPU Temp :52°C/125°F

CPU Fan :3183 RPM

CPU Voltage :1.368 V
3.3V Voltage :3.312 V
+12V Voltage :12.091 V
DRAM Voltage :1.920 V
Chip Voltage :1.152 V
+5V Voltage :5.094 V
VBAT :3.120 V

CPUFAN Mode Selection

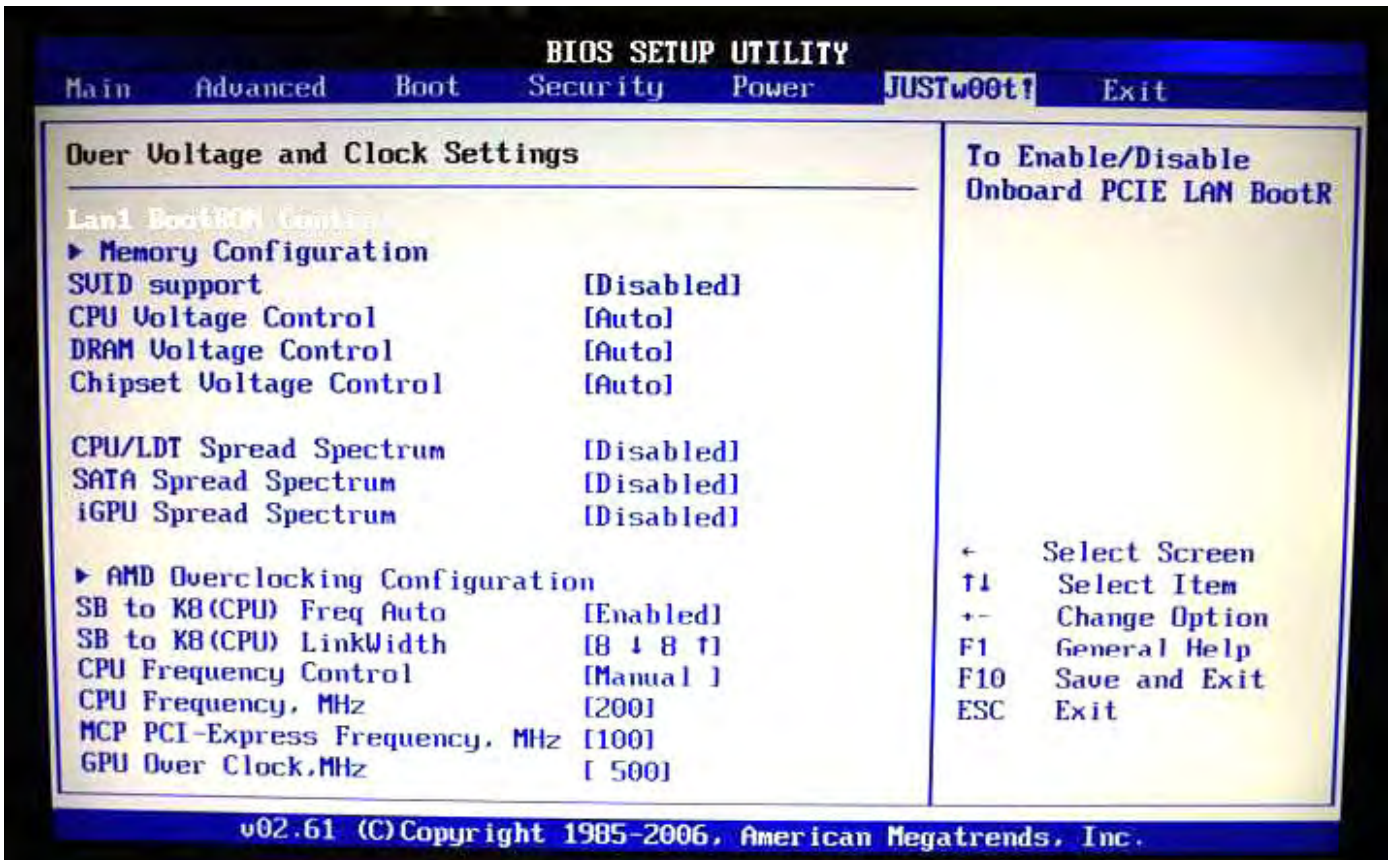
CPUFAN PWM Control [250]

CPUFan configuration mode setting

← Select Screen
↑↓ Select Item
+- Change Option
F1 General Help
F10 Save and Exit
ESC Exit

v02.61 (C) Copyright 1985-2006, American Megatrends, Inc.

System Health/monitor



JUSTw00t tab.

BIOS SETUP UTILITY

JUSTw00t!

NorthBridge Chipset Configuration

- ▶ Memory Configuration
- ▶ DRAM Timing Configuration

Alternate VID [Auto]

Memory CLK	:400 MHz, 400 MHz
CAS Latency (Tcl)	:5.0, 5.0
RAS/CAS Delay (Trcd)	:5 CLK, 5 CLK
Row Precharge Time (Trp)	:9 CLK, 9 CLK
Min Active RAS (Tras)	:18 CLK, 18 CLK
RAS/RAS Delay (Trrd)	:5 CLK, 5 CLK
Row Cycle (Trc)	:23 CLK, 23 CLK
Memory 2T Mode	[2T Model]

+ Select Screen
↑↓ Select Item
Enter Go to Sub Screen
F1 General Help
F10 Save and Exit
ESC Exit

v02.61 (C) Copyright 1985-2006, American Megatrends, Inc.

Memory Configuration

BIOS SETUP UTILITY

JUSTw00t!

Memory Configuration

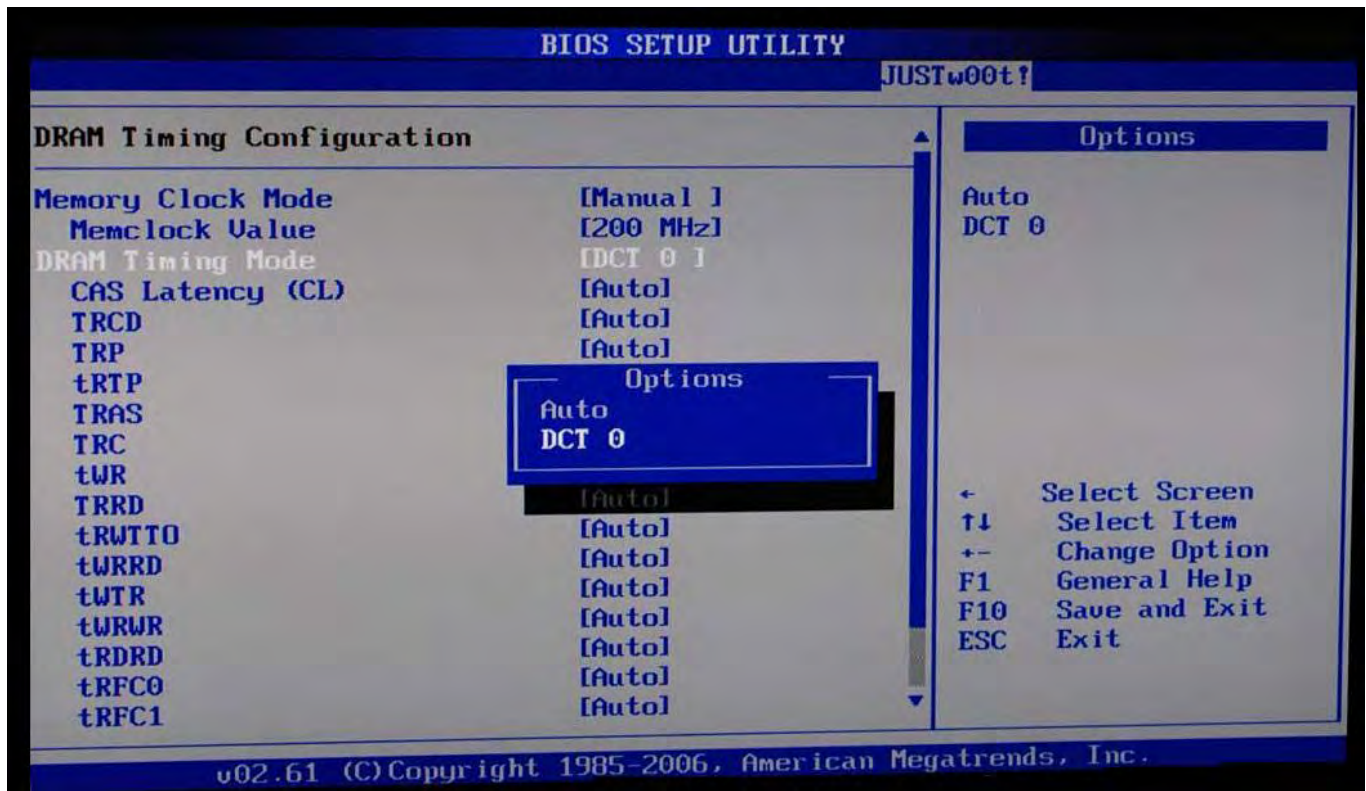
Bank Interleaving [Auto]
Enable Clock to All DIMMs [Disabled]
MemClk Tristate C3/ATLUID [Disabled]
Memory Hole Remapping [Enabled]
DCT Unganged Mode [Always]
Power Down Enable [Disabled]

Enable Bank Memory Interleaving

← Select Screen
↑↓ Select Item
+- Change Option
F1 General Help
F10 Save and Exit
ESC Exit

v02.61 (C) Copyright 1985-2006, American Megatrends, Inc.

Memory Configuration



DRAM Timing Configuration

BIOS SETUP UTILITY

JUST BOOT!

AMD Overclocking Configuration

Custom P-States

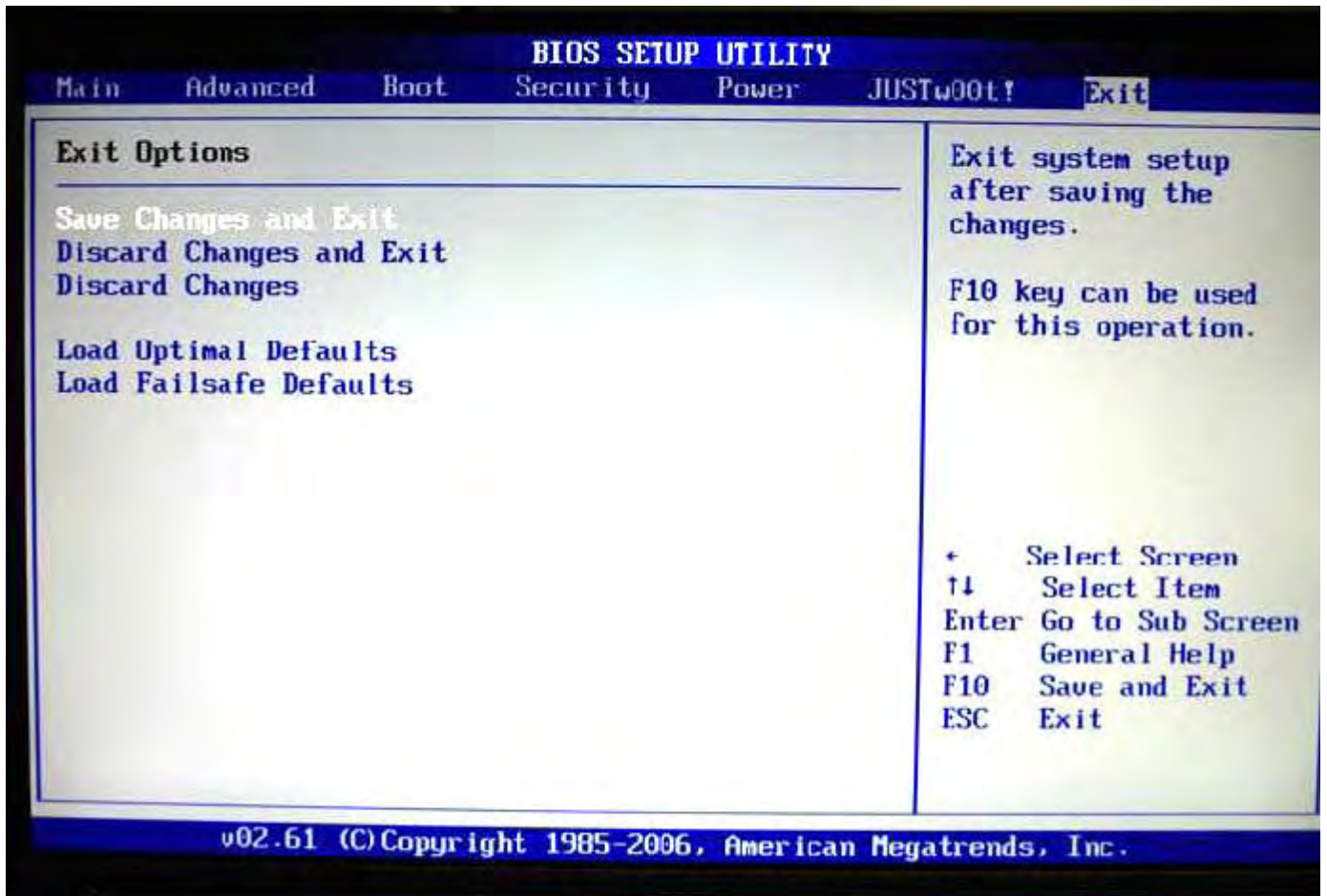
	Enabled
Current CPU FID :	8h
Current CPU VID :	14h
Current CPU DID :	Divided by 1
Current NB FID :	5h
Current NB VID :	14h
Current NB DID :	Divided by 1
Core FID	[00]
Core VID	[00]
Core DID	[Divided by 1]
NB FID	[00]
NB VID	[00]
NB DID	[Divided by 1]

Tells BIOS whether to use the setup options below this to configure the P-States, or whether to configure the P-States automatically

← Select Screen
↑↓ Select Item
+- Change Option
F1 General Help
F10 Save and Exit
ESC Exit

v02.61 (C) Copyright 1985-2006, American Megatrends, Inc.

Over clocking configuration



Exit Tab